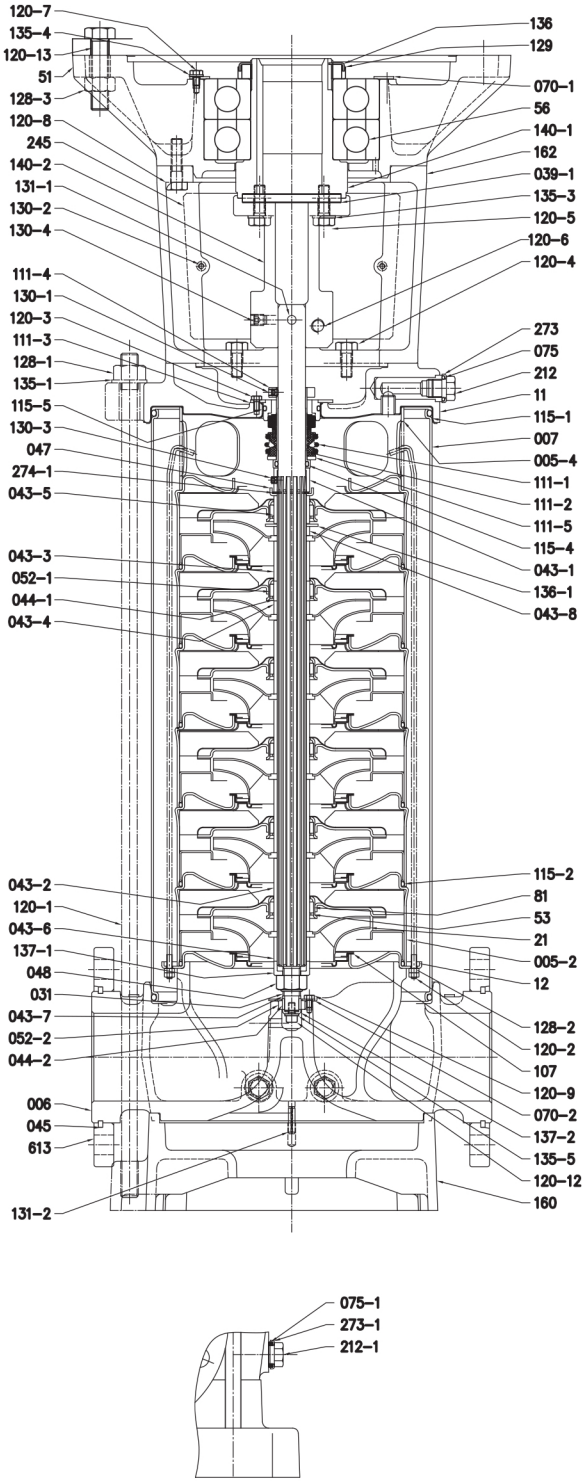


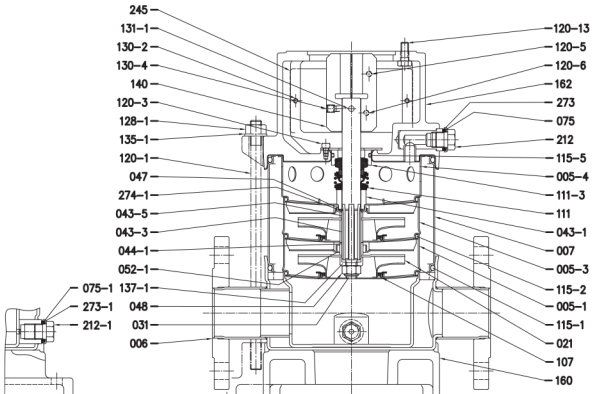
조립 단면도

Pump with double bearing [EVM45/64]

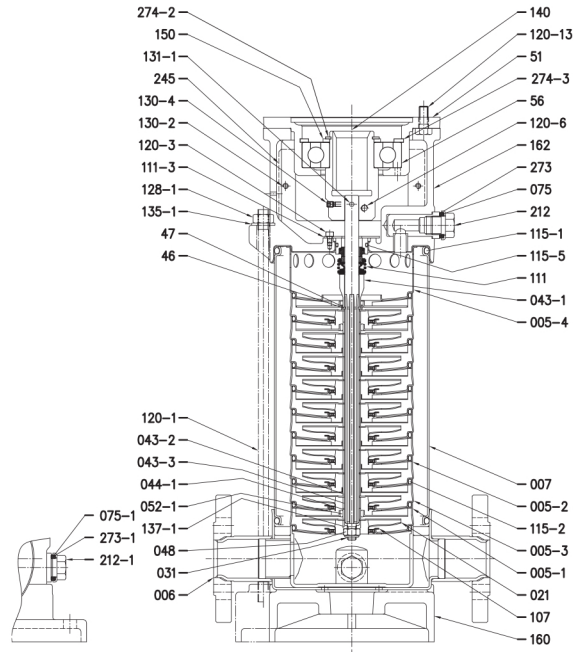


NO.	Part Name	Material			No For 1 Unit
		EVMG	EVM	EVML	
005-1	Suction Casing		STS304	STS316	1
005-2	Intermediate Casing		STS304	STS316	[1]
005-3	Intermediate Casing Bearing		STS304	STS316	[1]
005-4	Discharge Casing		STS304	STS316	1
006	Bottom Casing	Cast Iron	STS304/SSC13	STS316/SSC14	1
007	Outer Casing		STS316/STS304	STS316	1
011	Casing Cover	Cast Iron	Cast Iron/STS304	Cast Iron/STS316	[1]
012	Suction Cover		STS304	STS316	1
021	Impeller		STS304	STS316	[1]
031	Shaft		STS316		1
039-1	Key		Carbon Steel		[1]
043-1	Shaft Sleeve (Mechanical seal)		STS304	STS316	1
043-2	Shaft Sleeve (Intermediate)		STS304	STS316	[1]
043-3	Shaft Sleeve (Bearing)		STS304	STS316	[1]
043-4	Shaft Sleeve (Adjustment)		STS304	STS316	[1]
043-5	Shaft Sleeve (Last Stage)		STS304	STS316	1
043-6	Shaft Sleeve (Adjustment)		STS304	STS316	1
043-7	Shaft Sleeve (Bottom Bearing)		STS304	STS316	1
043-8	Shaft Sleeve (Discharge/Lower)		STS304	STS316	1
044-1	Shaft Sleeve Bearing		Tungsten Carbide		[1]
044-2	Bearing Sleeve		Tungsten Carbide		1
045	Flange Holder		STS420		4
047	Ring Holder		STS304	STS316	1
048	Impeller Nut	A2-70 UNI 7323		A4-70 UNI 7323	1
051	Motor Adapter	Cast Iron EN-GJL-200 EN 1561			1
052-1	Bearing		Tungsten Carbide		[1]
052-2	Bearing		Tungsten Carbide		1
053	Bush Holder		STS304	STS316	[1]
056	Ball Bearing		-		1
070-1	Ring for Bearing		STS304		[1]
070-2	Ring for Bearing		STS304	STS316	[1]
081	Bush		PTFE		[1]
107	Liner Ring	EPDM/STS304(03~18), PTFE/STS316(32~45)		PTFE / STS316	[1]
111-1	Mechanical Seal		Silicon Carbide / Carbon / FPM		1
111-2	Mechanical Seal Cartridge		STS304	STS316	1
111-3	Mechanical Seal Seat		STS304	STS316	1
111-4	Seal Holder		Brass OT 58 UNI 5705	STS316	1
111-5	Adjusting Ring		STS304	STS316	1
115-1	O-Ring (Outer Casing)		EPDM	FPM	2
115-2	O-Ring (Intermediate Casing)		EPDM	FPM	[1]
115-4	O-Ring (Cartridge Sleeve)		EPDM	FPM	1
115-5	O-Ring (Seal Cover)		EPDM	FPM	1
120	Tie-rod		Zincate Steel 6,8 Strenght Class 898/1		4
120-3	Screw (Mechanical Seal)		A2-70 UNI 7323		4
120-4	Screw (Casing Cover)		Zincate Steel 8,8 Strenght Class 898/1		[1]
120-5	Screw for Coupling(Pump)		Zincate Steel 8,8 Strenght Class 898/1		[1]
120-6	Screw for Coupling(Motor)		Zincate Steel 8,8 Strenght Class 898/12		
120-7	Screw (Coupling Bearing)		Zincate Steel 8,8 Strenght Class 898/1[1]		
120-9	Screw (Bearing Sleeve)		STS304	STS316	4
120-12	Screw (Shaft Spacer)		STS304	STS316	1
120-13	Screw (Motor Adapter)		Zincate Steel 8,8 Strenght Class 898/14		
130-2	Screw for Coupling Guard		A2-70 UNI 7323		4
131-1	Pin for Shaft		Carbon Steel		1
136	Bearing Washer		Carbon Steel		[1]
137-1	Impeller Spacer		STS304	STS316	1
137-2	Shaft Spacer		STS304	STS316	1
140	Coupling		Brass OT 58 UNI 5705		[1]
140-1	Motor Coupling		Carbon Steel		[1]
140-2	Coupling (Pump Side)		Carbon Steel		[1]
150	Spacer		Carbon Steel		[1]
160	Base		Cast Iron EN-GJL-200 EN 1561		1
162	Motor Bracket		Cast Iron EN-GJL-200 EN 1561		1
212	Plug		STS304	STS316	[1]
245	Coupling Guard		STS304		2
274-1	C-Type Snap Ring (M/Seal)		STS304	STS316	1
274-2	C-Type Snap Ring (Coupling)		Carbon Steel TC80		[1]
274-3	C-Type Snap Ring (Bracket)		Carbon Steel TC80		[1]
613	Flange		Carbon Steel		2

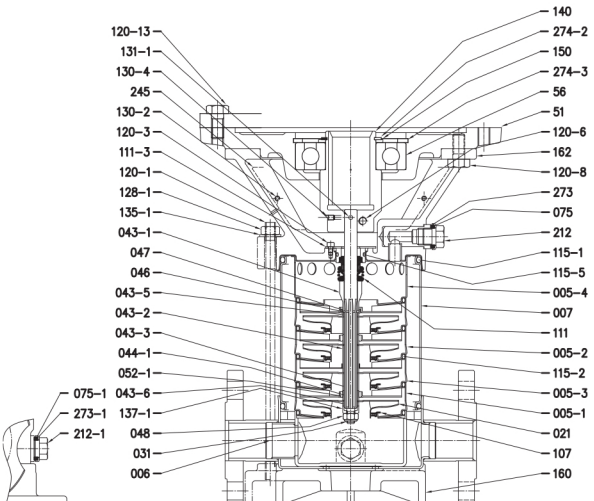
Pump without ball bearing [EVM03/05/10/18/32]



Pump with single ball bearing [EVM03/05/10]



Pump with single ball bearing [EVM10/18/32/45/64]



Pump with single ball bearing [EVM45/64]

